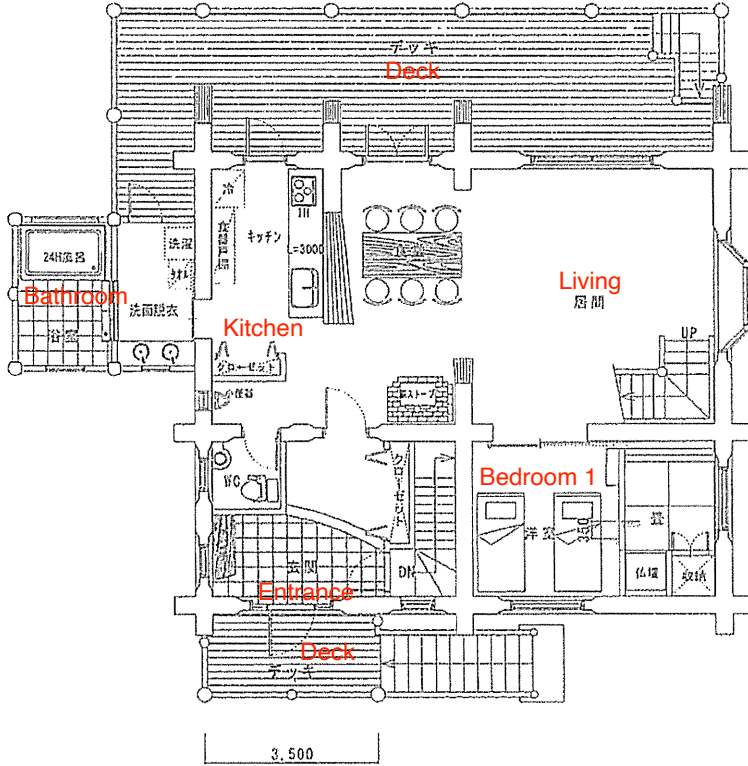


3,800		10,500	
2,000	1,800	5,250	5,250
		2,600	2,650



3,000	5,500	4,400	1,200
9,000	1,100	3,000	200
3,500	1,600		
1,900			
1,800			



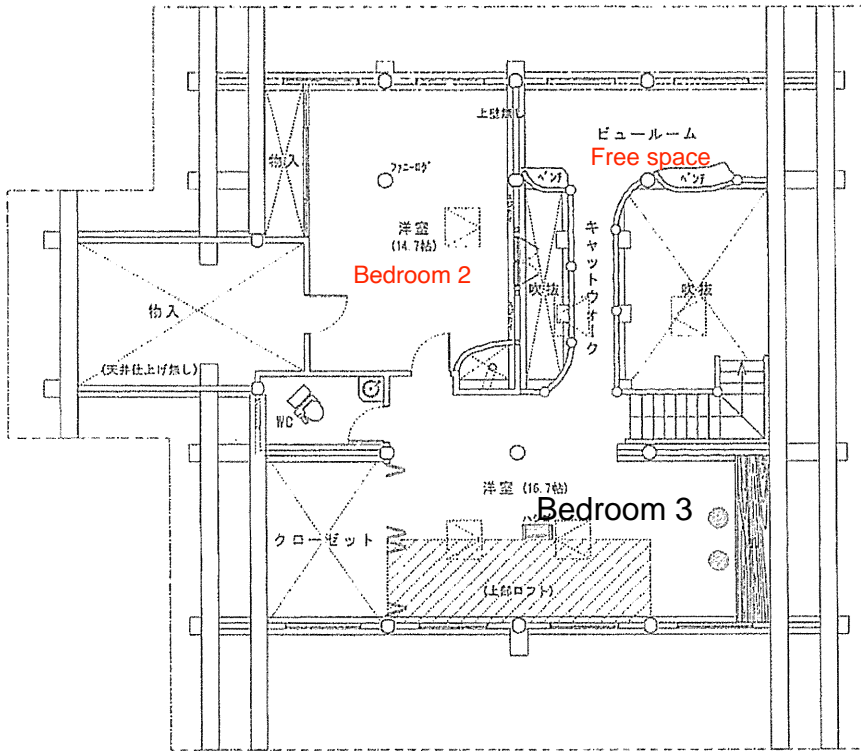
3,000	5,500	9,000
1,050	2,450	3,500
1,800		

		3,700	1,550	3,200	950	1,100	
2,000	1,600	5,250		5,250			
3,800		10,500					

一階平面図 1 / 100

地階床面積
一階床面積
二階床面積
延床面積
一階デッキ面積
施工面積

3,800		10,500				1,000
2,800	1,000	5,250		5,250		
1,100	1,000	4,250	1,100	900	3,250	

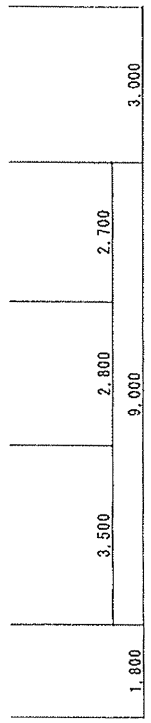
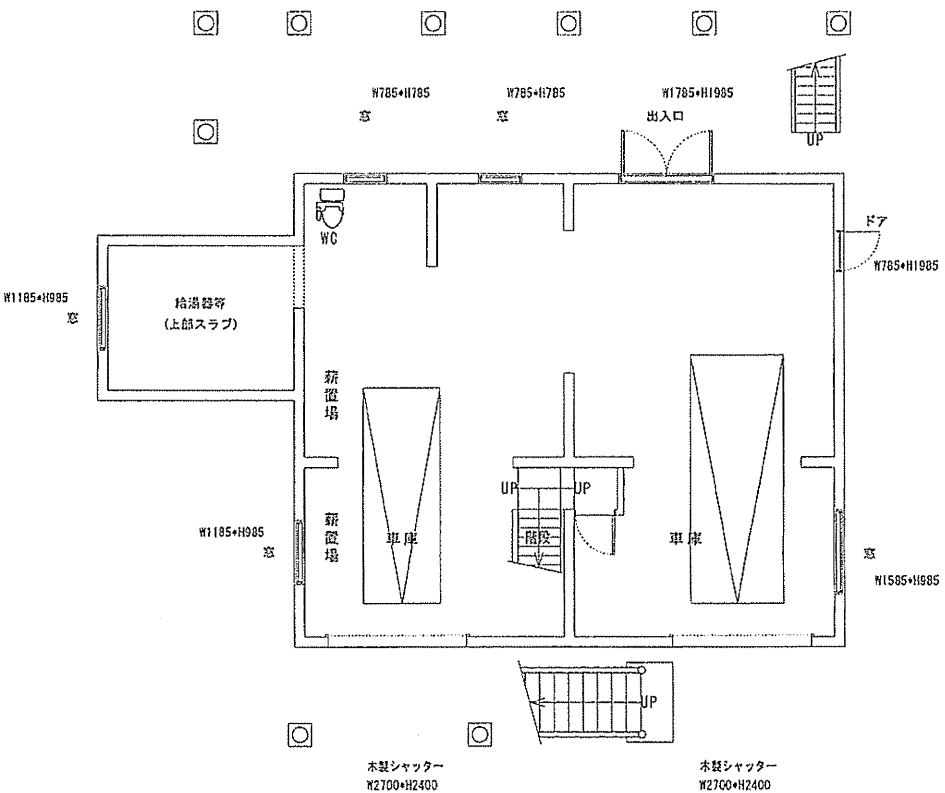
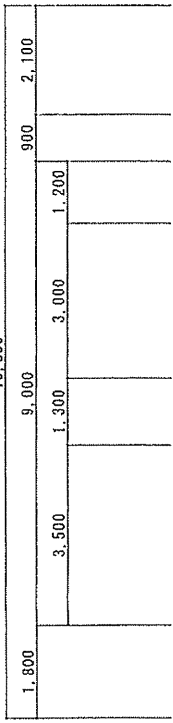
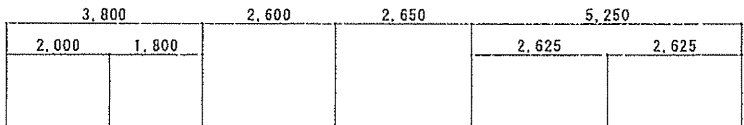
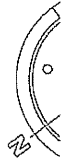


2,000		
4,275		
5,500		
1,225		
3,500		
9,000		

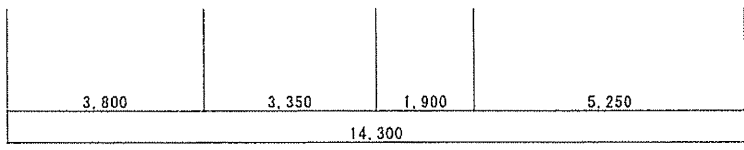
2,800		1,000	2,600	2,650	5,250	5,250	
3,800			10,500				1,000

二階平面図 1/100

- (32.09坪)
- (32.09坪)
- (32.90坪)
- (97.09坪)
- (17.47坪)
- (120.1坪)



※ 浴室部分の土間関係については打ち合わせによる



地階平面図 1 / 100