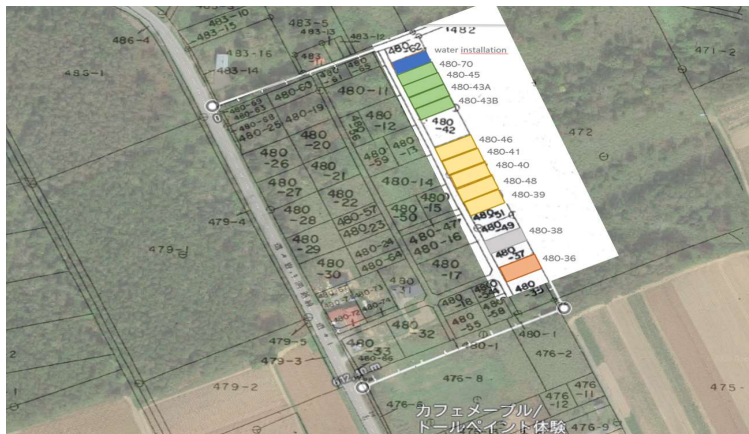


Soga Meadows

lot #	AZA SOGA	lot size m2	tsubo	construction foot print in m2(1)	floor ratio in m2 (1)	price	price/tsubo	price/sq m	specifications
1	480-70	334	101	167	668	¥ 17.500.000	¥ 173.267	¥ 52.413	adjacent to 480-45
2	480-45	334	101	167	668	¥ 17.500.000	¥ 173.267	¥ 52.413	adjacent to 480-70 & 480-43A
3	480-43A	334	101	167	668	¥ 17.500.000	¥ 173.267	¥ 52.413	adjacent to 480-45 & 480-43B
4	480-43B	334	101	167	668	¥ 17.500.000	¥ 173.267	¥ 52.413	adjacent to 480-43A
5	480-46	420	127	210	840	¥ 22.500.000	¥ 177.165	¥ 53.592	adjacent to 480-41
6	480-41	420	127	210	840	¥ 22.500.000	¥ 177.165	¥ 53.592	adjacent to 480-46 and 480-40
7	480-40	420	127	210	840	¥ 22.500.000	¥ 177.165	¥ 53.592	adjacent to 480-41 and 480-48
8	480-48	420	127	210	840	¥ 22.500.000	¥ 177.165	¥ 53.592	adjacent to 480-40 and 480-39
9	480-39	420	127	210	840	¥ 22.500.000	¥ 177.165	¥ 53.592	adjacent to 480-48
10	480-38	420	127	210	840	¥ 22.500.000	¥ 177.165	¥ 53.592	solitary
11	480-36	463	140	231	926	¥ 24.500.000	¥ 175.000	¥ 52.937	solitary



(1) This is the maximum construction foot print and floor ratio. Snow shed and setback rules and build height guidelines must also be followed. Snow clearing and road management will be done by a property manager and calculated on a percentage size of the plot sold. A water well has been drilled, producing good quality and quantity. A pump house will be built. A sinking fund schedule will be put in place.